

## 公司介绍

### Company Profile

LANDY蓝尔迪成立于2000年，是一家集研发、生产、销售、服务于一体的集团企业，拥有1.6万平米的广州总部，以及5.8万平米的阳江生产基地。

蓝尔迪旗下“INSUL-PACK”品牌专注于隔热保温和包装薄膜领域，专业生产制造铝箔隔热保温材料、仓储货运隔热包装、快递物流包装等系列产品，包括铝箔隔热材、隔热保温袋、物流托盘罩、阁楼保温罩、集装箱隔热袋等衍生品，以及托盘围布、缓冲包装材等。

蓝尔迪重视科研创新，拥有数十名技术研发人员，设立三大前沿实验室，引进国内外先进研发设备，包括紫外线老化机、拉力测试机、热老化试验箱、止滑机、耐磨仪等，具备产品自主研发能力并获得50多项国家专利。

LANDY was founded in 2000. It is a group enterprise integrating R&D, production, sales and service, with a 16,000 m<sup>2</sup> headquarters in Guangzhou and a 58,000 m<sup>2</sup> production base in Yangjiang.

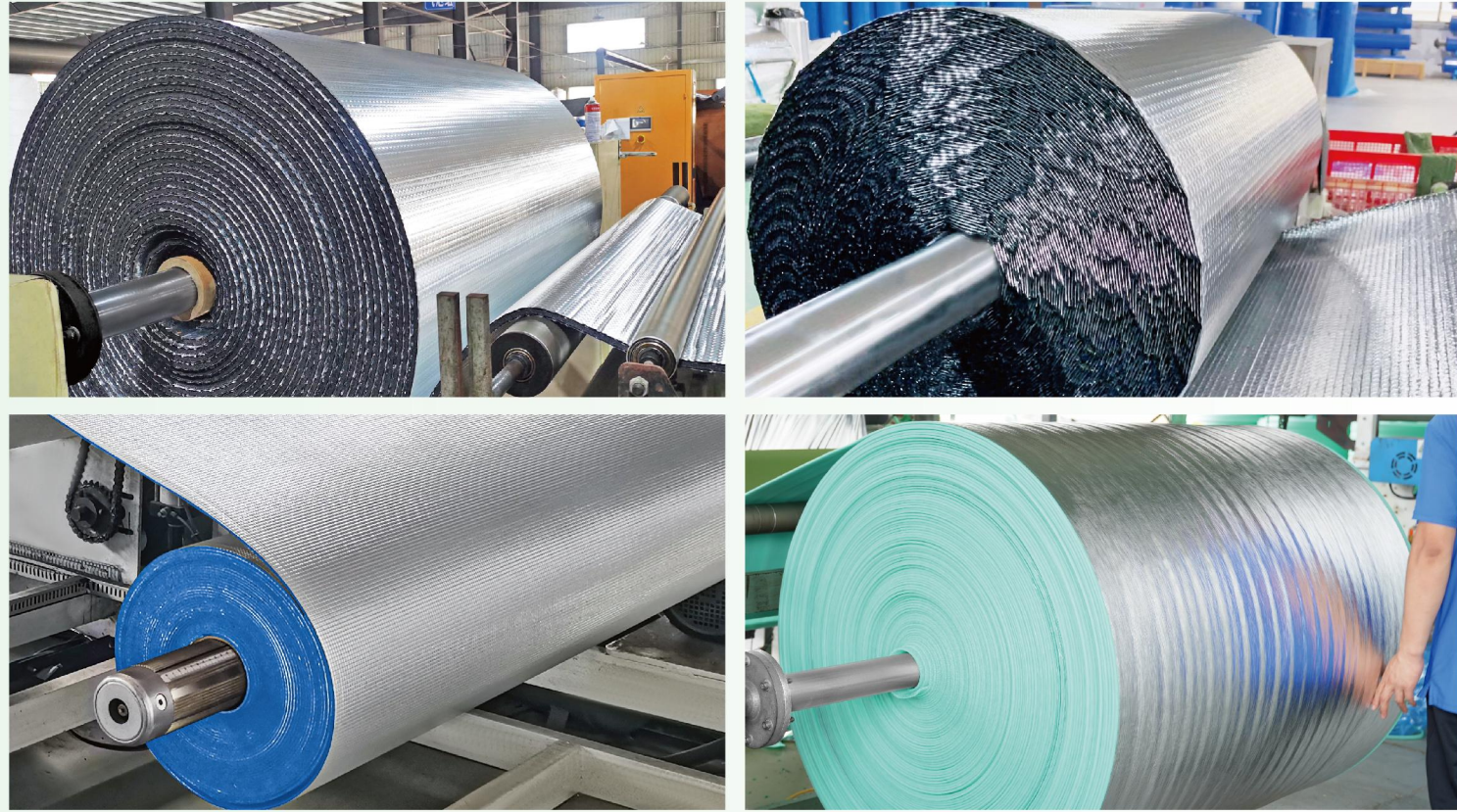
LANDY has two independent brands “LANDY” and “INSUL-PACK”, and its products have passed CE, AWTA, ASTM, SGS, ROHS, REACH and other professional certifications, etc. We have been focusing on the field of thermal insulation materials and logistics and shipping packaging for more than 20 years. The product lineup includes aluminum foil bubble insulation materials, insulated bags, thermal pallet covers, attic covers, cushioning packaging materials, and so on.

LANDY has obtained the High-Tech Enterprise, ISO9001 (2015) Quality Management certification, and has a standardized and perfect management system. LANDY emphasizes on scientific research and innovation, has dozens of technical research and development personnel, set up three cutting-edge laboratories, with independent research and development capabilities of products and more than 50 national patents.



高新技术企业认证  
High-tech Enterprise Certificate

ISO9001证书  
ISO9001 Certificate



15条自动化生产线  
15 Automated Production Lines



20000+m<sup>2</sup> 智能仓库  
20000+ Square Meters Intelligent Warehouse

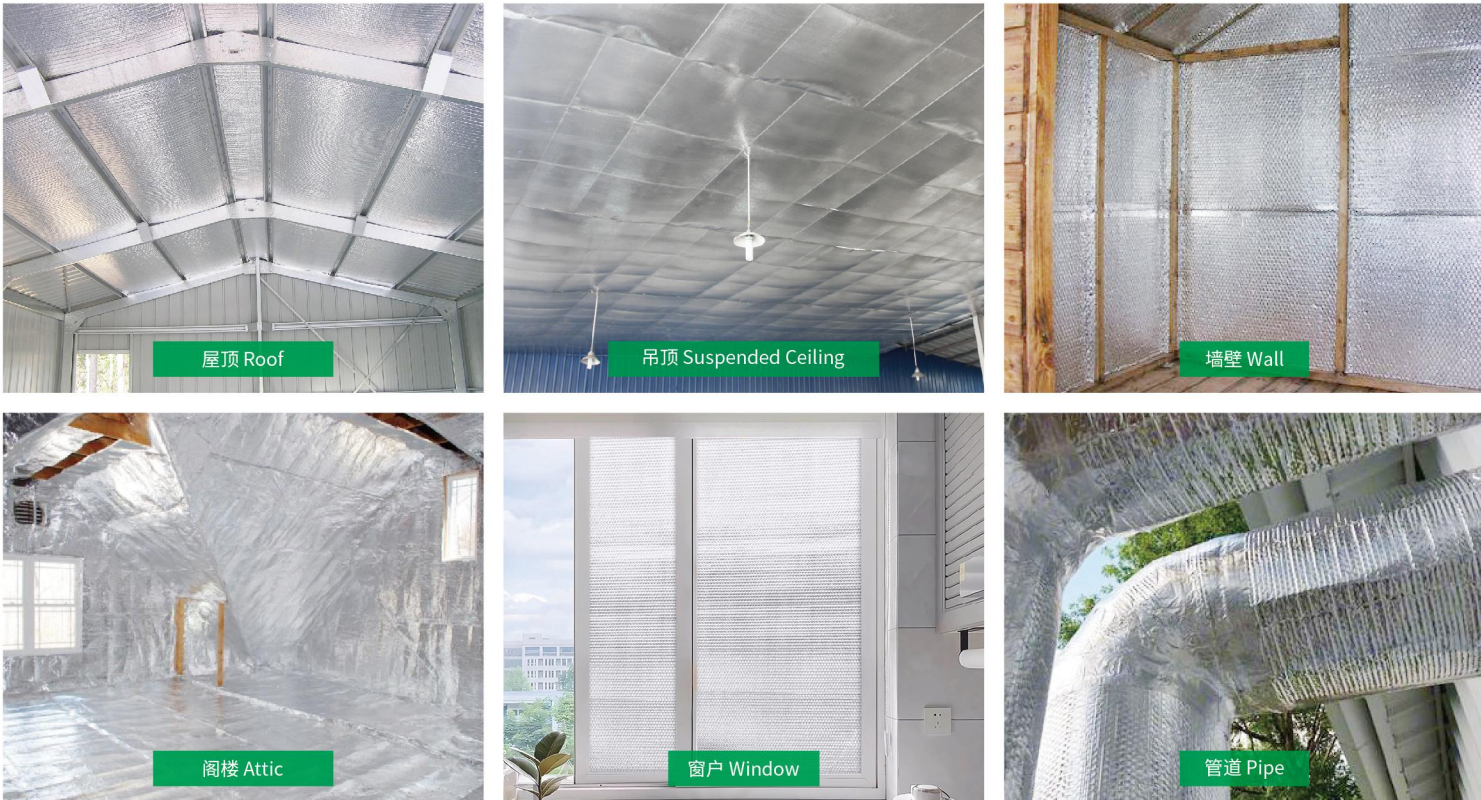
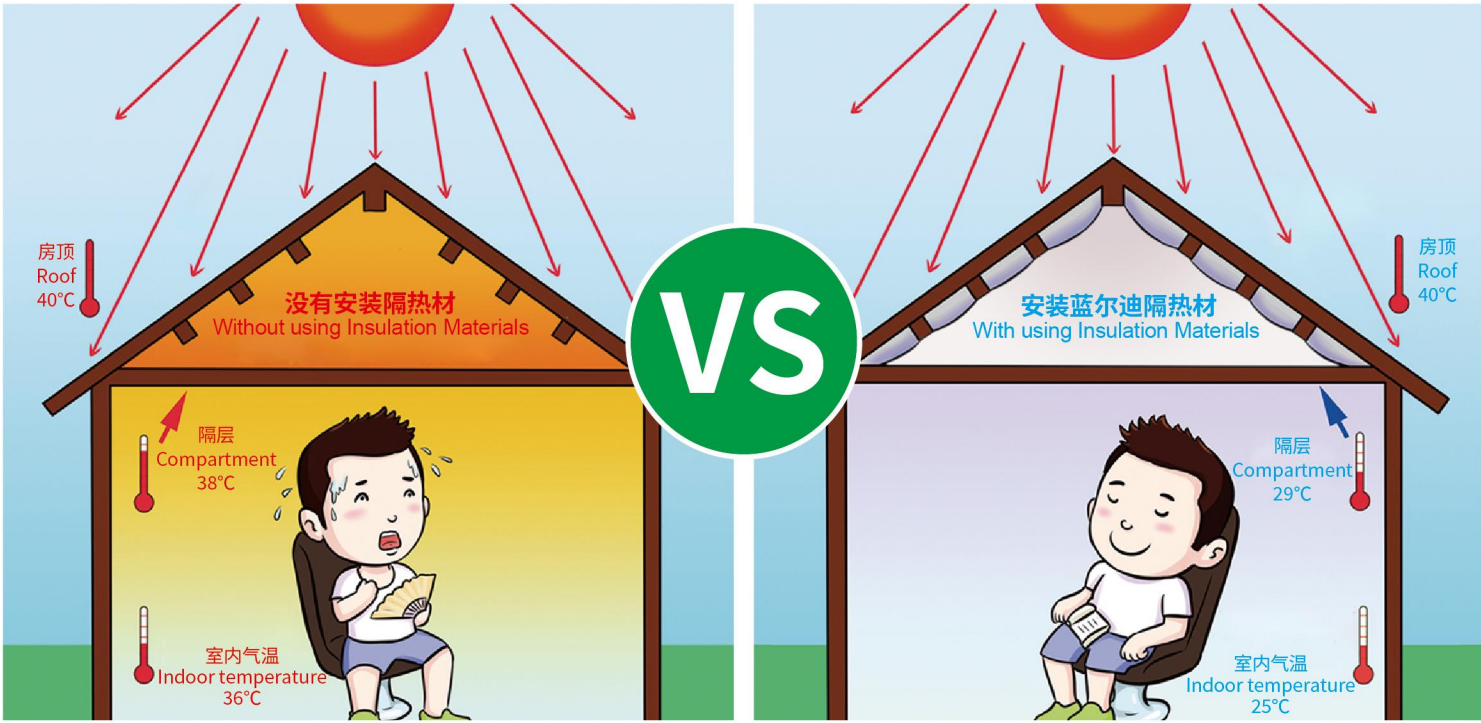


50+个/月 装柜出货  
50+ Pcs/Month For Container Shipment



## 安装效果

### Installation effect



☎ +86-(0)20-34791069  
400-803-3839  
✉ landy@landy360.com

🌐 www.landy360.com  
www.landy55.com  
www.landyinsulpack.com

📍 广州蓝尔迪：广东省广州市南沙区东涌镇石排段215号  
Guangzhou Add：NO. 215, Shinan Rd, Shipai Village, Dongchong Town, Nansha Dist, Guangzhou, Guangdong, China



阳江蓝尔迪：广东省阳江市江城区银岭科技产业园B区13号  
Yangjiang Add：NO. 13, Area B, Yinling Technology Industrial Park, Jiangcheng Dist, Yangjiang, Guangdong, China

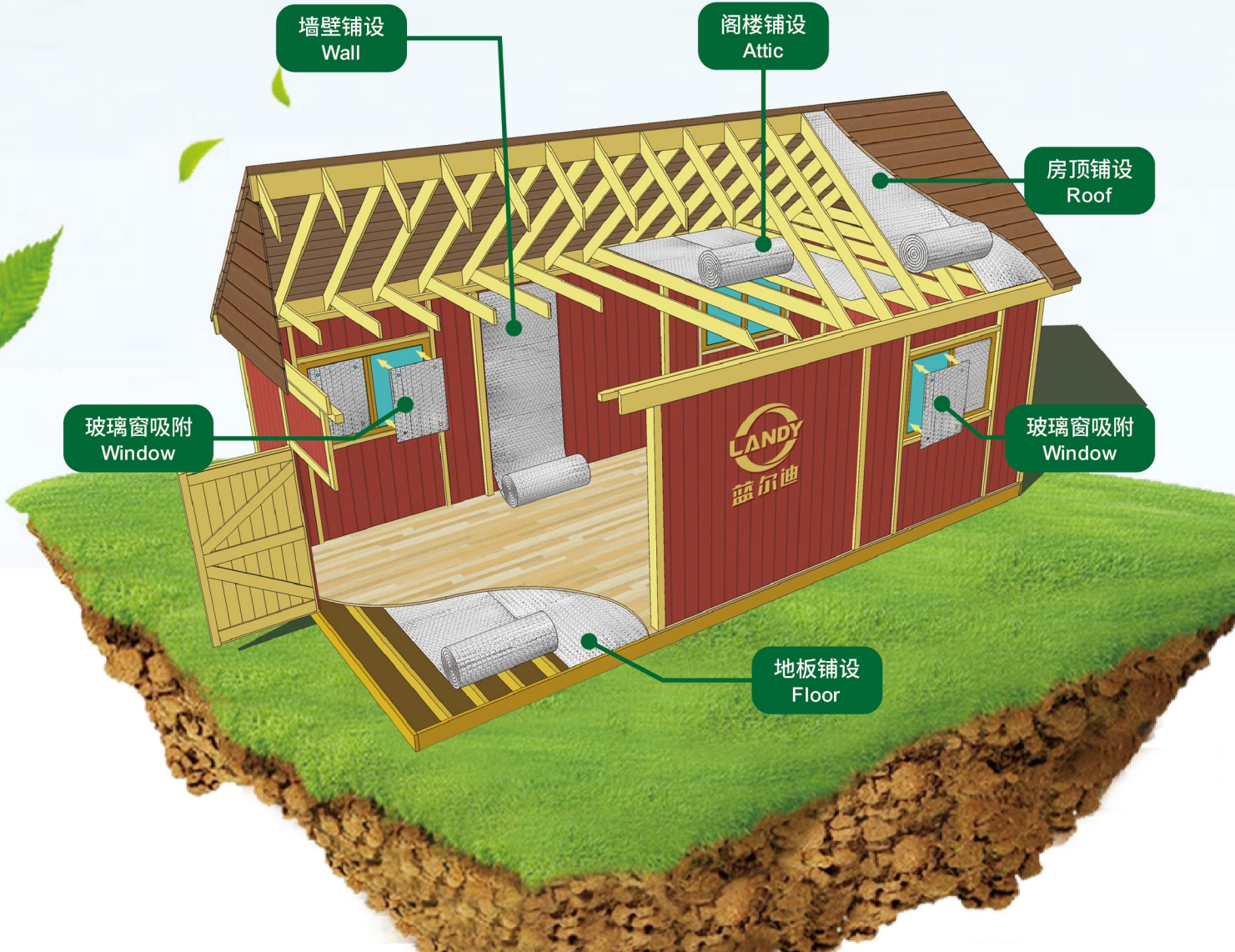


# 蓝尔迪隔热材

## 您的天然冷暖空调

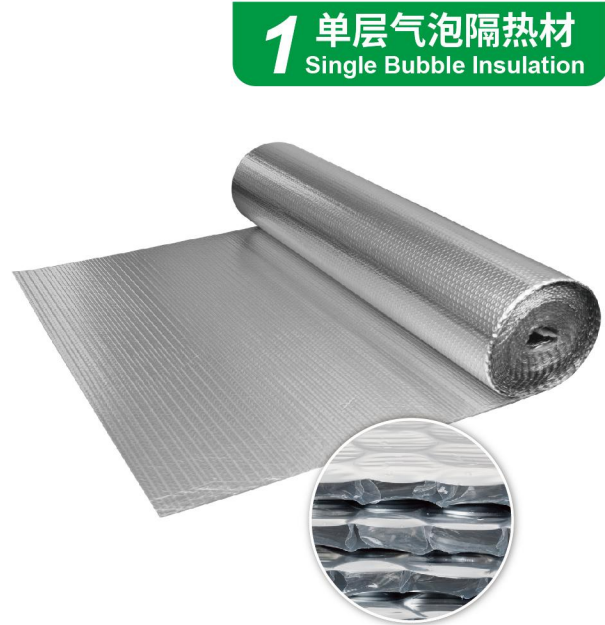
### LANDY Insulation

### Save Your Energy Bill

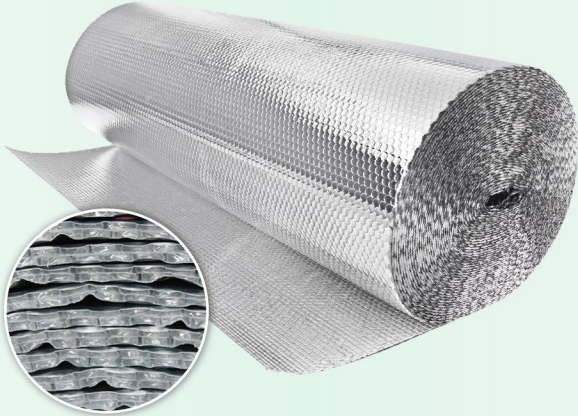




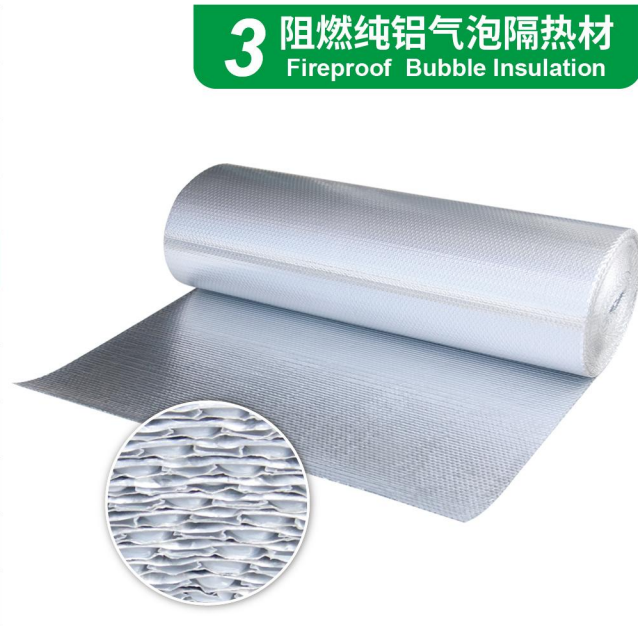
材质结构Material Structure	纯铝/镀铝+气泡+纯铝/镀铝 Alu/Metallic+Bubble+Alu/Metallic	
气泡规格Bubble Size	Φ10mm, H3mm	
卷料尺寸Roll Size	1.2m*40m (可定制Customized)	
平方克重GSM	200 g/㎡ (可定制克重Customized)	
测试项目 (标准) Test Items (standard)	镀铝 Alu Foil	纯铝 Alu Foil
热阻Thermal Resistance (ASTM-C518-21)	0.092 (㎡·K)/W	0.092 (㎡·K)/W
导热系数Thermal Conductivity (ASTM-C518-21)	0.028 W/(m·k)	0.036 W/(m·k)
反射率 Reflectivity	95~97%	95~97%
REACH材料安全 REACH (1907/2006)	通过 PASS	
工作温度 Performance Temperture	-40~80℃	-40~100℃
耐破强度Breakage Strength (GB/T 1539-2007)	834 Kpa	1022 Kpa



## 2 双层气泡隔热材 Double Bubble Insulation

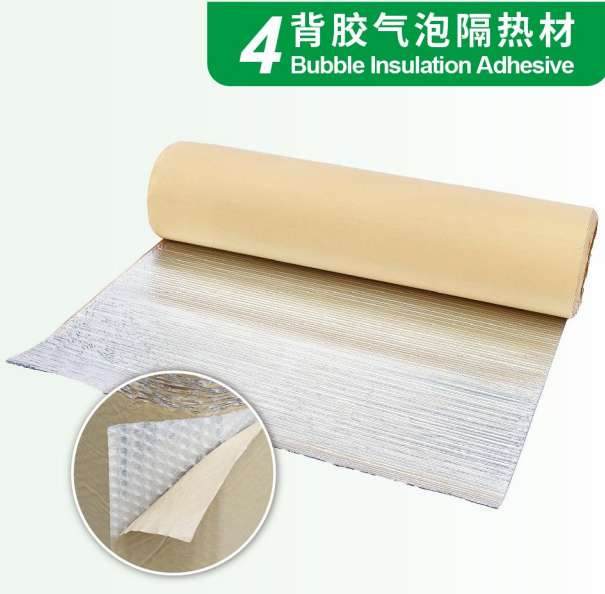


材质结构Material Structure	纯铝+阻燃气泡+纯铝 Alu Foil+Fireproof Bubble+Alu Foil	
气泡规格Bubble Size	Φ10mm, H3mm	
卷料尺寸Roll Size	1.2m*40m (可定制Customized)	
平方克重GSM	340 g/㎡ (可定制克重Customized)	
测试项目 (标准) Test Items (standard)	参数 Parameter	标准范围 Standard Range
AWTA 易燃指数 AWTA Flammability Index(AS 1530.2)	1	0 - 100
燃烧增长速率Burning Rate (GB/T 20284-2006)	139	≤250 W/s
烟气生成速率Smoke Generation Rate (GB/T 20284-2006)	78	≤180 m³/ S²
产烟毒性Smoke Toxicity (GB/T 20285-2006)	ZA3	准安全级Quasi-safe (ZA)
氧指数Tensile Strength (GB/T 1040.3-2006)	33.5%	>27% 属难燃材料 Flame retardant
防火等级 Fire Rating	B1级难燃 B1 Flame Retardant	

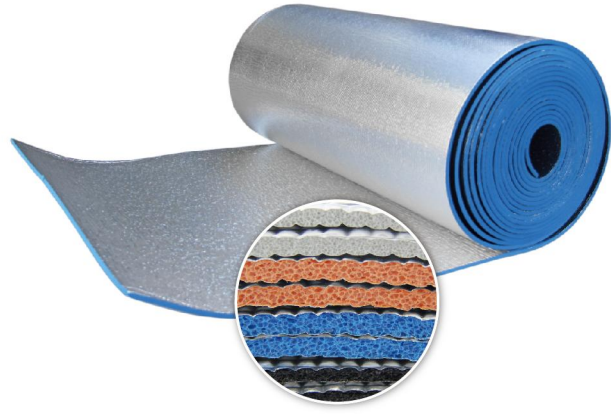


材质结构Material Structure	纯铝/镀铝+气泡+气泡+纯铝/镀铝 Alu/Metallic+Bubble+Bubble+Alu/Metallic	
气泡规格Bubble Size	Φ10mm, H6mm	
卷料尺寸Roll Size	1.2m*30m (可定制Customized)	
平方克重GSM	300 g/㎡ (可定制克重Customized)	
测试项目 (标准) Test Items (standard)	镀铝 Metallic	纯铝 Alu Foil
热阻Thermal Resistance (ASTM-C518-21)	0.161 (㎡·K)/W	0.136 (㎡·K)/W
导热系数Thermal Conductivity (ASTM-C518-21)	0.037 W/(m·k)	0.044 W/(m·k)
REACH材料安全 REACH (1907/2006)	通过 PASS	
工作温度 Performance Temperture	-40~80℃	-40~100℃
拉伸强度Tensile Strength (JC/T 2494-2018)	横向Horizontal: 264 N/50mm 纵向Longitudinal: 290 N/50mm	横向Transverse: 370 N/50mm 纵向Longitudinal: 373 N/50mm

材质结构Material Structure	纯铝/镀铝+气泡+防水耐高温背胶 Alu/Metallic+Bubble+Waterproof & Heat Resistant Adhesive	
气泡规格Bubble Size	H3mm (可定制Customized)	
卷料尺寸Roll Size	1.2m*40m (可定制Customized)	
平方克重GSM	230 g/㎡ (可定制克重Customized)	
测试项目 (标准) Test Items (standard)	镀铝 Metallic	纯铝 Alu Foil
热阻Thermal Resistance (ASTM-C518-21)	0.092 (㎡·K)/W	0.092 (㎡·K)/W
导热系数Thermal Conductivity (ASTM-C518-21)	0.028 W/(m·k)	0.036 W/(m·k)
反射率 Reflectivity	95~97%	95~97%
REACH材料安全 REACH (1907/2006)	通过 PASS	
工作温度 Performance Temperture	-40~80℃	-40~100℃



## 5 双面纯铝XPE隔热材 Aluminum XPE Foam Insulation



材质结构Material Structure	纯铝+XPE+纯铝 Alu+XPE Foam+Alu	
产品厚度Thickness	3/5/6/10mm (可定制Customized)	
卷料尺寸Roll Size	1.2m*30m (可定制Customized)	
平方克重GSM	265 g/㎡ (可定制克重Customized)	
测试项目 (标准) Test Items (standard)	厚度5mm Thickness 5mm	厚度10mm Thickness 10mm
热阻Thermal Resistance (ASTM-C518-21)	0.122 (㎡·K)/W	0.231 (㎡·K)/W
导热系数Thermal Conductivity (ASTM-C518-21)	0.041 W/(m·k)	0.043 W/(m·k)
抗撕裂性Tearing Resistance (T470am-ODD)	-	纵向Longitudinal 541N 横向horizontal 432N
水蒸气透过率Water Vapour Permeability (ASTM E96)	<0.02	g/(m² .h)
吸声系数 Sound Absorption Coefficient	5.4%(1000HZ)	
AWTA 易燃指数 AWTA Flammability Index (AS 1530.2)	3 (0-100等级) / 3 (Level 0-100)	

材质结构Material Structure	纯铝+XPE+防水耐高温背胶 Alu + XPE Foam + Waterproof & Heat Resistant Adhesive	
产品厚度Thickness	3/5/6/10mm (可定制Customized)	
卷料尺寸Roll Size	1.2m*30m (可定制Customized)	
平方克重GSM	5mm: 265 g/㎡ (可定制克重Customized)	
测试项目 (标准) Test Items (standard)	厚度5mm Thickness 5mm	厚度(+编织布) 8mm Thickness(+Woven) 8mm
热阻Thermal Resistance (ASTM-C518-21 AS/NZS 4201.5)	0.13 (㎡·K)/W	0.22 (㎡·K)/W
导热系数Thermal Conductivity (ASTM-C518-21 AS/NZS 4201.5)	0.04 W/(m·k)	0.04 W/(m·k)
抗撕裂性Tearing Resistance (T470am-ODD)	-	纵向Longitudinal 541N 横向horizontal 432N
水蒸气透过率Water Vapour Permeability (ASTM E96)	<0.02	g/(m² .h)
吸声系数 Sound Absorption Coefficient	5.4%(1000HZ)	
AWTA 易燃指数 AWTA Flammability Index (AS 1530.2)	3 (0-100等级) / 3 (Level 0-100)	



## 6 背胶纯铝XPE隔热材 Aluminum XPE Foam Insulation Adhesive

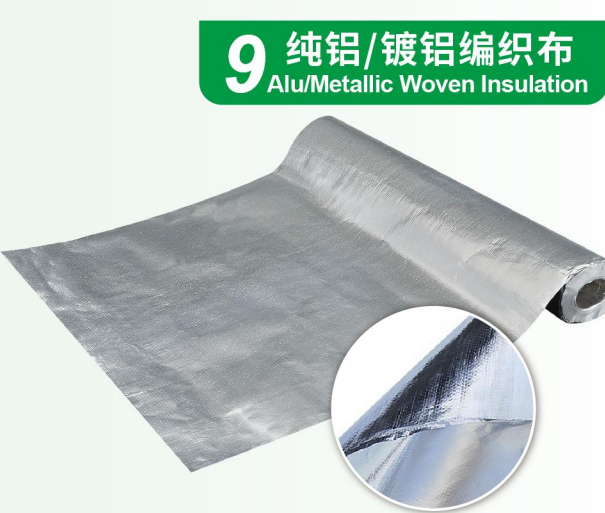
材质结构Material Structure	纯铝/镀铝+气泡+XPE棉/EPE棉+气泡+ 纯铝/镀铝 Alu/Metallic+Bubble+XPE/EPE Foam+Bubble+Alu/Metallic		
产品厚度Thickness	10mm		
卷料尺寸Roll Size	1.2m*25m		
平方克重GSM	450 g/㎡		
测试项目 (标准) Test Items (standard)	性能规格 Performance	测试项目 (标准) Test Items (standard)	性能规格 Performance
热阻Thermal Resistance (ASTM-C518-21 AS/NZS 4201.5)	0.122 (㎡·K)/W	水蒸气透速率 Water Vapour Permeability (ASTM E96)	<0.02 g/(m² .h)
导热系数Thermal Conductivity (ASTM-C518-21 AS/NZS 4201.5)	0.041 W/(m·k)	工作温度 Working Temperature	-40 ~ 80℃
吸声系数 Sound Absorption Coefficient	5.4%(1000HZ)	反射率 Relectivity	97%



## 8 双面镀铝EPE隔热材 Metallic EPE Foam Insulation



材质结构Material Structure	纯铝/镀铝+编织布+纯铝/镀铝 Alu/Metallic+Woven+Alu/Metallic	
卷料尺寸Roll Size	1.23*400m (可定制Customized)	
平方克重GSM	纯铝+编织布+纯铝Alu+Woven+Alu 135 g/㎡ 镀铝+编织布+镀铝Metallic+Woven+Metallic 120 g/㎡	
测试项目 (标准) Test Items (standard)	参数 Parameter	单位 Unit
抗拉强度 Tensile Strength	纵Vertical 650 横Horizontal 520	N/50mm
水蒸气透速率Water Vapour Permeability (ASTM E96)	<0.02	g/(m² .h)
耐破强度Bursting Strength (ISO 2759:2014)	1366	kPa
反射率 Reflectivity	96%	
REACH材料安全(1907/2006) REACH (1907/2006)	通过 PASS	



## 9 纯铝/镀铝编织布 Alu/Metallic Woven Insulation

卷料尺寸Roll Size	48mm x 28m (可定制Customized)
包装方式Packaging	36卷/箱 36 Rolls/Ctn
产品用途Applications	拼接隔热材，密封修补 Splicing thermal insulation materials and performing sealing repairs
反射率 Reflectivity	95~97%
工作温度 Performance Temperture	-40~100℃

材质结构Material Structure	纯铝/镀铝+气泡/编织布+纯铝/镀铝 Alu/Metallic+Bubble/Woven+Alu/Metallic
平方克重GSM	135g/m² , 200g/m² , 230g/m²
产品厚度Thickness	3/6mm (可定制Customized)
成品尺寸Product Size	可定制尺寸 PALLET SIZE/CUSTOMISED
开口方式Opening Method	魔术贴/拉链 Zipper and Velcro
面数Bottom Options	5面/6面 5-side/6-side (有无底部with or without bottom)

## 11 托盘隔热袋 Thermal Pallet Cover



## 12 INSUL-CTN 3 集装箱袋 INSUL-CTN 3 Container Liner



材质结构Material Structure	纯铝+编织布+纯铝 Alu+Woven+Alu
单件总重Total Weight Per Piece	20GP 14±5 Kg/件; 40HQ 25± 5kg /件; 45HQ 27± 5kg /件 20GP 14±5 Kg/pc; 40HQ 25± 5kg /pc; 45HQ 27± 5kg /pc
成品尺寸Size	20GP/40HQ/45HQ
类型Type	6面有底 / 5面无底 6 sides with bottom / 5 sides no bottom
安装方法Installation Method	查看安装说明书 View installation instructions
使用建议Recommendations for Use	托盘保温罩+集装箱保温袋，隔热效果更好 Pallet Insulated Cover + Container Liner Bag for better heat insulation

材质结构Material Structure	纯铝/镀铝+气泡/XPE+纯铝/镀铝 Alu/Metallic+Bubble/XPE+Alu/Metallic
平方克重GSM	200g/m²   230g/m²
产品厚度Thickness	3/6mm
尺寸Product Size	138*64*28cm/153*77*28cm/25"x54"x11"
开口方式Opening Method	双拉链头 Two-way zipper
包装Packing	PE 袋/纸箱 PE Bag/Cartoon

## 13 阁楼罩 Thermal Attic Cover



## 14 内衬袋/方底袋/保温盒 Box Liner/Thermal Bag



保温时长Cooler Keeping Time	4h-42h 温度不超过15℃ (内部测试数据仅供参考。建议取样测试) 4h-42h The temperature does not exceed 15℃ ( Internal test data is for reference only. Suggested sampling test)
材料结构Material Structure	纯铝/镀铝+气泡/双层气泡/EPE+PE Alu/Metallic+Bubble/Double Bubble/EPE+PE
厚度Thickness	2/3/6mm
产品尺寸Size	25.5*25.5*25.5cm (可定制Customized)
包装Packaging	PE袋/编织袋 PE Bag Woven Bag
开口方式Opening Methods	胶条、密封、拉链等 PE Bag/Woven Bag
用途Usage	包装易腐产品和冷冻产品 Tape, Lock, Zipper, etc.